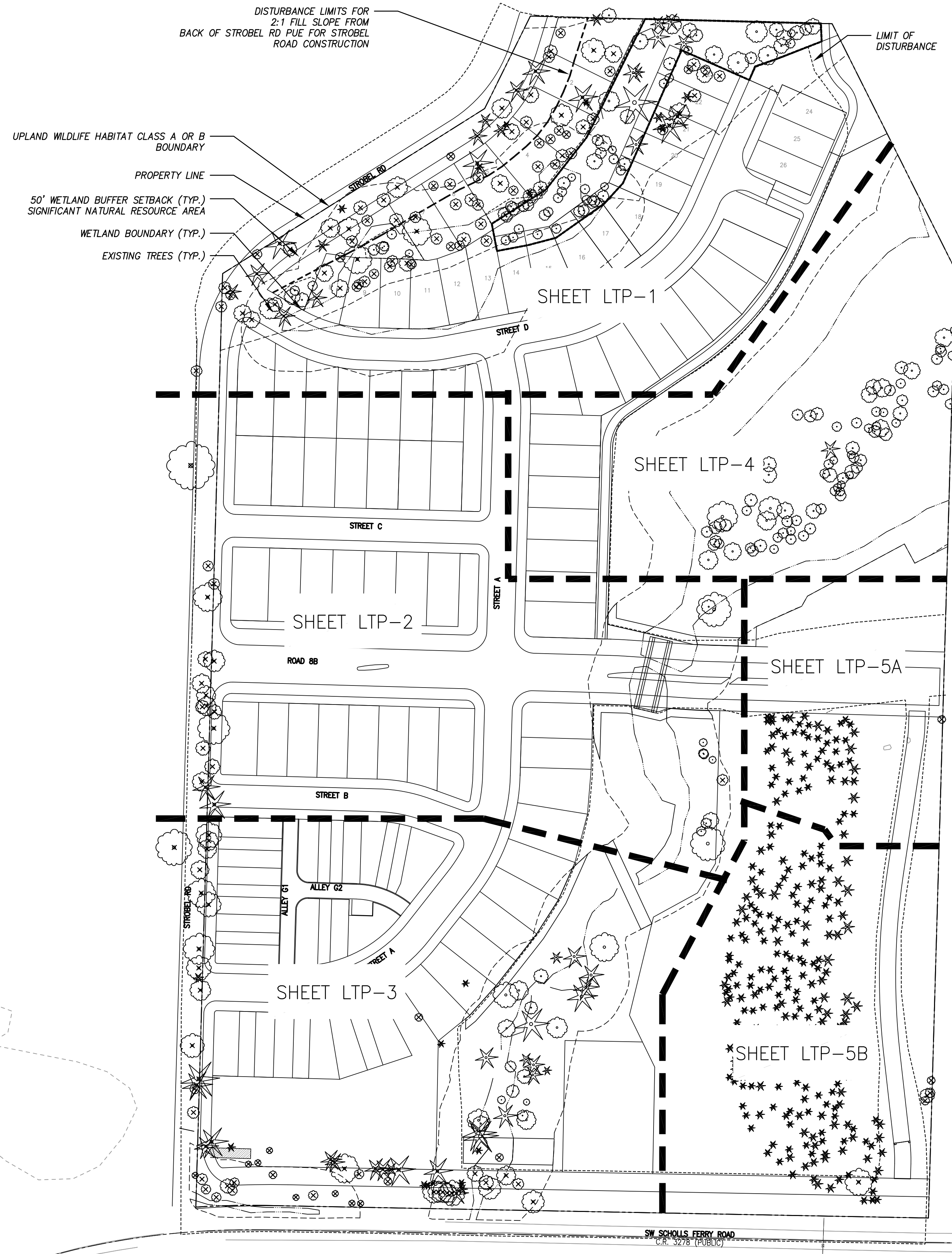
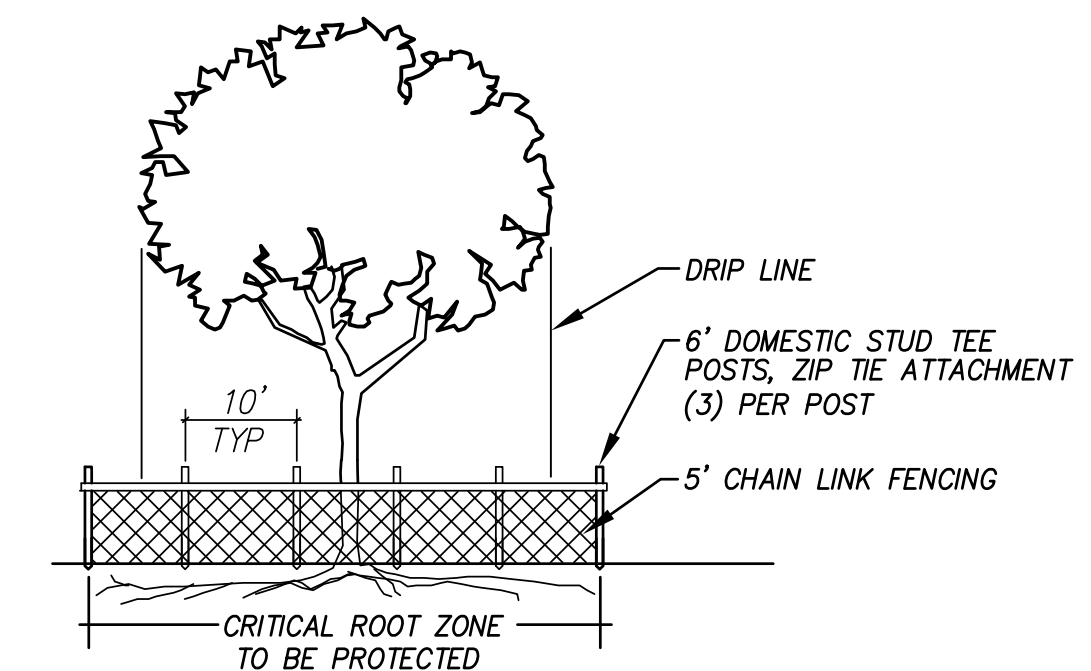


Plotted: Jun 20, 2017 - 4:55pm staved L:\Project\17800\17849\CADD\17849\Archive\Land Use\Submittal\062117\17849LTP-SET.dwg Layout Name: LTP-0



NOTES:

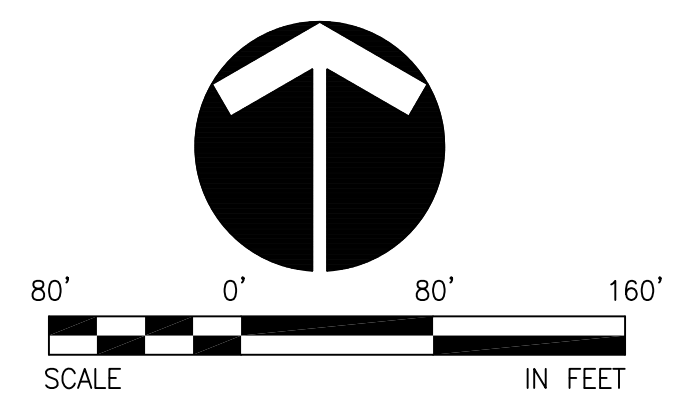
- 1) SEE SHEET P2.0-P2.4 FOR ADDITIONAL SITE DEVELOPMENT AND BOUNDARY INFORMATION.
- 2) NO SIGNIFICANT INDIVIDUAL TREES OR HISTORIC TREES EXIST ON SITE.
- 3) NONE OF THE FOLLOWING TREES ARE PRESENT WITHIN THE SIGNIFICANT NATURAL RESOURCE AREA:
 - WESTERN HEMLOCK
 - MOUNTAIN HEMLOCK
 - BIGLEAF MAPLE
- 4) REMOVED COMMUNITY TREES = 478
REMOVED COMMUNITY TREES DBH = 7,246
- 5) REMOVED SNRA TREES = 131
REMOVED SNRA TREES DBH = 2,524
- 6) SEE TREE PROTECTION FENCING DETAIL ON SHEET LPT-0



NOTE:
EXISTING TREES TO REMAIN (PER PLAN) - PROTECT WITH 5' HT. CHAIN LINK FENCING AROUND DRIP LINE DURING CONSTRUCTION. NEITHER TOP SOIL STORAGE NOR CONSTRUCTION MATERIAL SHALL BE LOCATED WITHIN THE DRIP LINE OF TREE. FENCES SHALL BE IN PLACE PRIOR TO BEGINNING CONSTRUCTION. ADJUSTMENTS TO THE LOCATION OF PROTECTIVE FENCING MAY BE REQUIRED TO COMPLETE CONSTRUCTION OF PERMANENT FACILITIES.

TREE PROTECTION DETAIL

NOT TO SCALE



THE RIDGE AT SOUTH COOPER MOUNTAIN
 BEAVERTON, OREGON
TREE PLAN


otak
 HanmiGlobal Partner
 808 SW 3rd Ave., Ste. 300
 Portland, OR 97204
 Phone: (503) 287-6825
 Fax: (503) 415-2304
 www.otak.com
 17849 P17849LTP-SET
 Project No. Drawing No.
LTP-0
 Sheet No.
 © Otak, Inc. 2016

NO.	DATE	BY	REVISION COMMENTS

Design	Drawn	Checked	Date	Initial Issue Date:

DISTURBANCE LIMITS FOR
2:1 FILL SLOPE FROM
BACK OF STROBEL RD PUE FOR STROBEL
ROAD CONSTRUCTION

PROPERTY LINE

STROBEL RD

STREET D

STREET A

UPLAND WILDLIFE CLASS A OR B
BOUNDARY

EXISTING CWS VEGETATED CORRIDOR









EXISTING WETLAND BOUNDARY

MATCHLINE - SEE SHEET LTP-4

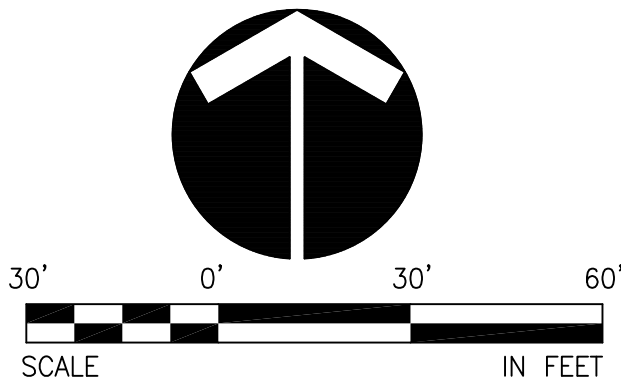
MATCHLINE - SEE SHEET LTP-2

MATCHLINE - SEE SHEET LTP-4

LEGEND

-  CONTOUR 2 FT.
-  #837 EXISTING COMMUNITY TREES (10-INCH DBH AND LARGER) AND TREE I.D. NUMBER. SEE TREE DATA TABLE
-  #838
-  TREE CANOPY DRIPLINE (APPROX.)
-  ROOT ZONE (5 FT. OUTSIDE DRIPLINE)
-  TREES TO BE REMOVED
-  LIMIT OF GRADING
-  TREE PROTECTION FENCING

- NOTES:
- 1) SEE SHEET P2.0-P2.4 FOR ADDITIONAL SITE DEVELOPMENT AND BOUNDARY INFORMATION.
 - 2) NO SIGNIFICANT INDIVIDUAL TREES OR HISTORIC TREES EXIST ON SITE.
 - 3) NONE OF THE FOLLOWING TREES ARE PRESENT WITHIN THE SIGNIFICANT NATURAL RESOURCE AREA:
 - WESTERN HEMLOCK
 - MOUNTAIN HEMLOCK
 - BIGLEAF MAPLE
 - 4) REMOVED COMMUNITY TREES = 478
REMOVED COMMUNITY TREES DBH = 7,246
 - 5) REMOVED SNRA TREES = 131
REMOVED SNRA TREES DBH = 2,524
 - 6) SEE TREE PROTECTION FENCING DETAIL ON SHEET LPT-0



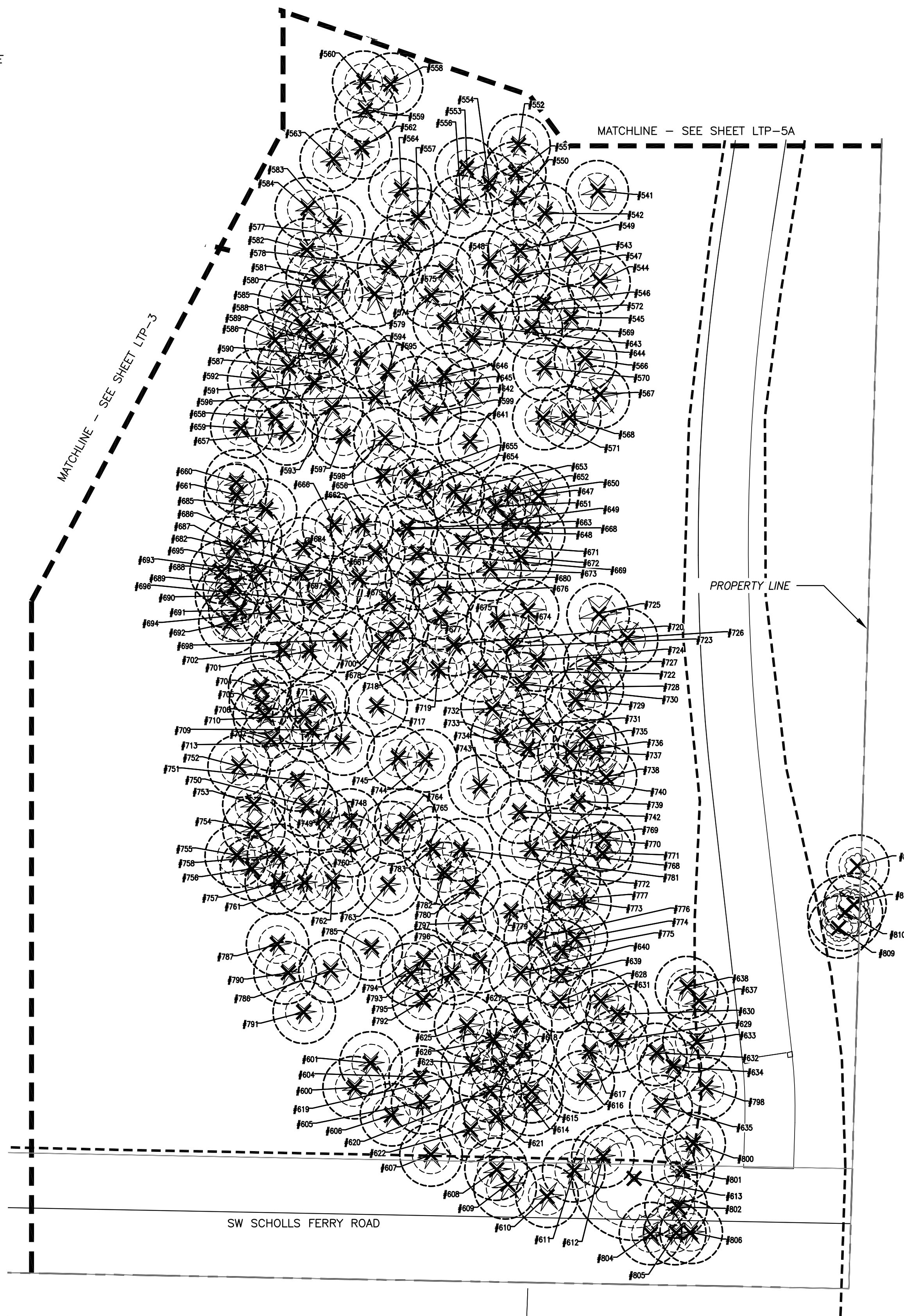
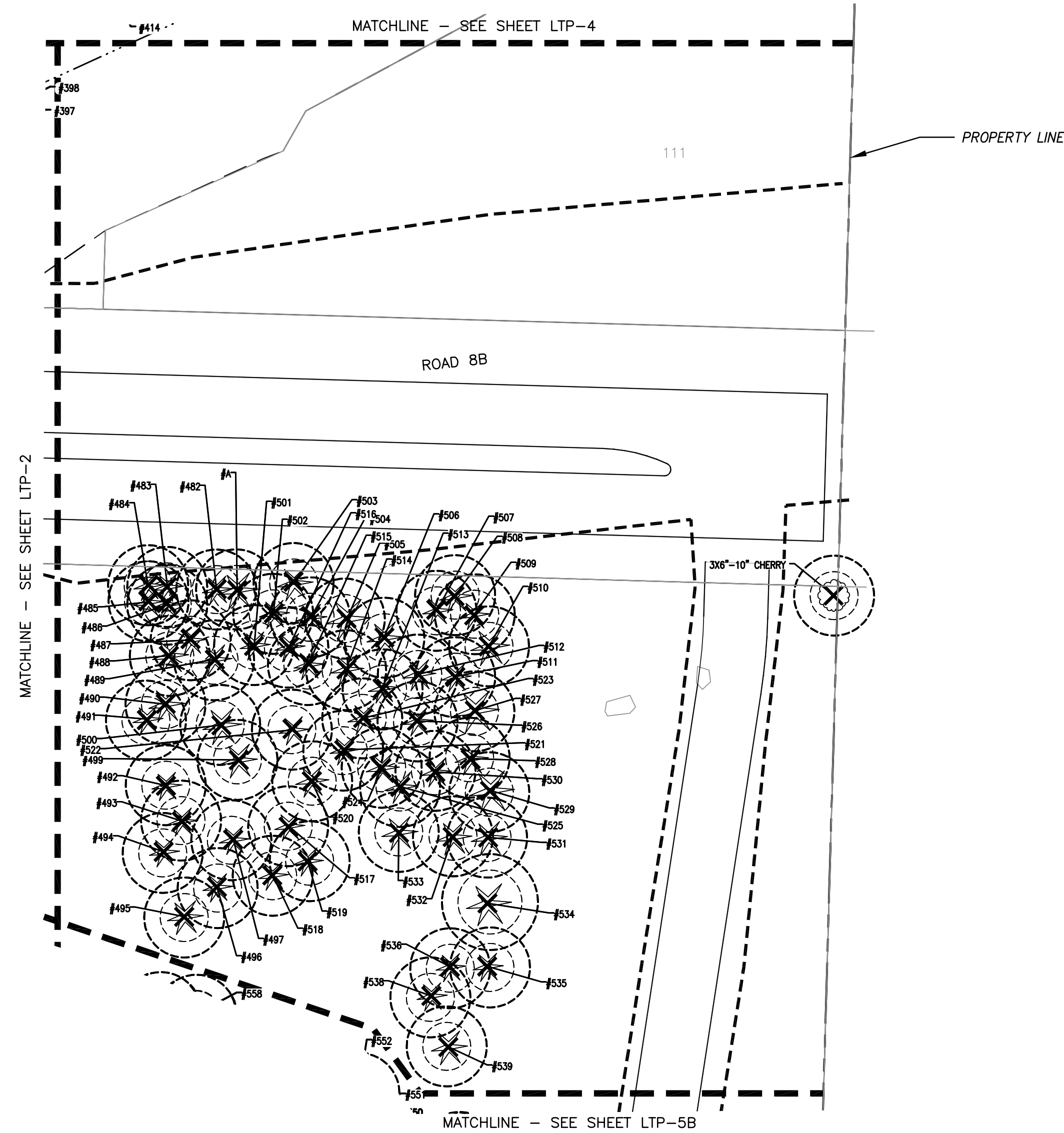
THE RIDGE AT SOUTH COOPER MOUNTAIN
BEAVERTON, OREGON
TREE PLAN

otak
HanmiGlobal Partner
808 SW 3rd Ave., Ste. 300
Portland, OR 97204
Phone: (503) 287-6825
Fax: (503) 415-2304
www.otak.com

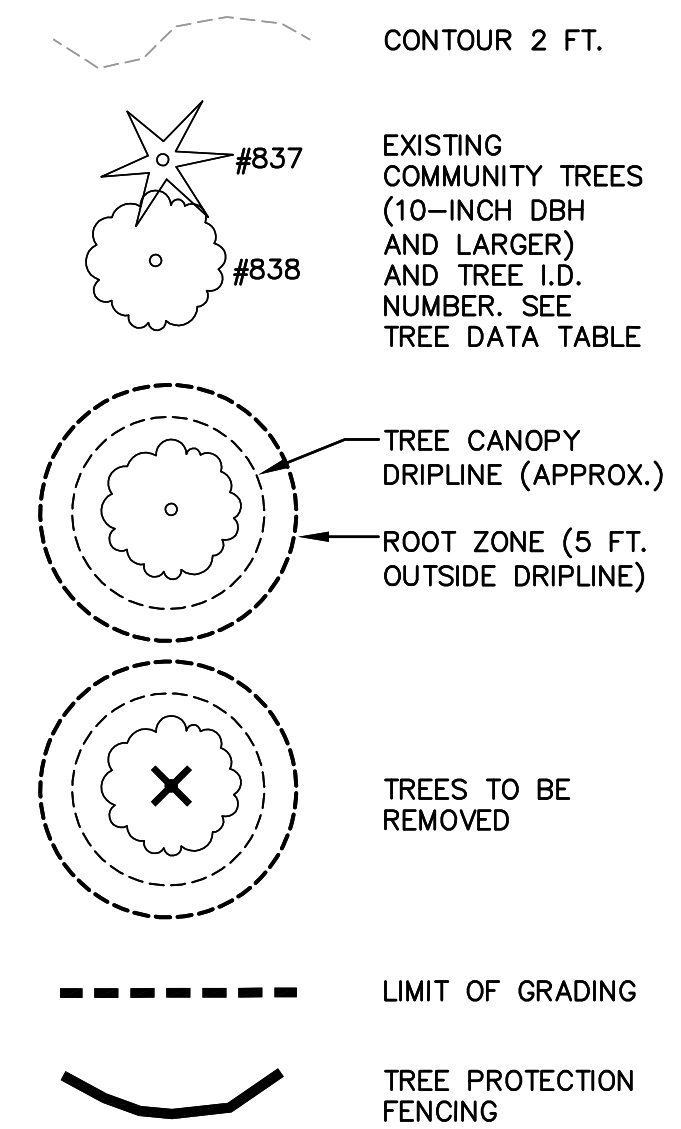
17849_P17849LTP-5-SET
Project No. Drawing No.
LTP-1
Sheet No.
© Otak, Inc. 2016

NO.	DATE	BY	REVISION COMMENTS

Plotted: Jun 20, 2017 - 4:57 pm saved L:\Project\17800\17849\CADD\17849\Archive\Land Use\Submittal\062117\17849LTP-5-SET.dwg Layout Name: LTP-1

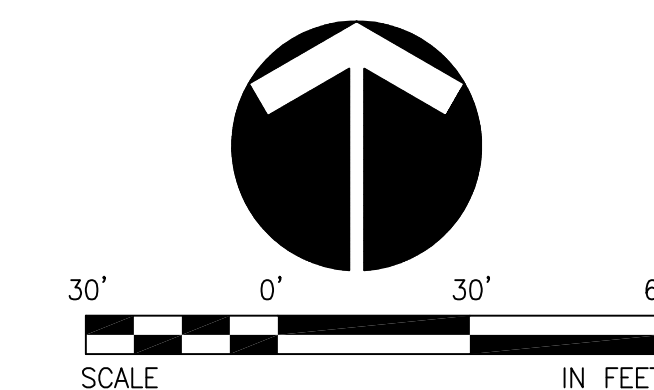


LEGEND



NOTES:

- 1) SEE SHEET P2.0-P2.4 FOR ADDITIONAL SITE DEVELOPMENT AND BOUNDARY INFORMATION.
- 2) NO SIGNIFICANT INDIVIDUAL TREES OR HISTORIC TREES EXIST ON SITE.
- 3) NONE OF THE FOLLOWING TREES ARE PRESENT WITHIN THE SIGNIFICANT NATURAL RESOURCE AREA:
 - WESTERN HEMLOCK
 - MOUNTAIN HEMLOCK
 - BIGLEAF MAPLE
- 4) REMOVED COMMUNITY TREES = 478
REMOVED COMMUNITY TREES DBH = 7,246
- 5) REMOVED SNRA TREES = 131
REMOVED SNRA TREES DBH = 2,524
- 6) SEE TREE PROTECTION FENCING DETAIL ON SHEET LPT-0



THE RIDGE AT SOUTH COOPER MOUNTAIN
 BEAVERTON, OREGON
 TREE PLAN



NO.	DATE	BY	REVISION COMMENTS

Design	Drawn	Checked	Date	Initial Issue Date

Table with 15 columns: Tag, Common Name, Botanical Name, Deciduous, Evergreen, DBH, Condition, Remove, Comm. Tree, DBH of Comm. Tree, SNRA Tree, DBH of Tree in SNRA, SNRA Tree Remove, DBH of SNRA Tree, DBH of SNRA Tree Remove. Rows include species like Fraxinus latifolia, Quercus garryana, Pinus strobus, etc.

Table with 15 columns: Tag, Common Name, Botanical Name, Deciduous, Evergreen, DBH, Condition, Remove, Comm. Tree, DBH of Comm. Tree, SNRA Tree, DBH of Tree in SNRA, SNRA Tree Remove, DBH of SNRA Tree, DBH of SNRA Tree Remove. Rows include species like Quercus garryana, Fraxinus latifolia, Salix sp., etc.

Table with 15 columns: Tag, Common Name, Botanical Name, Deciduous, Evergreen, DBH, Condition, Remove, Comm. Tree, DBH of Comm. Tree, SNRA Tree, DBH of Tree in SNRA, SNRA Tree Remove, DBH of SNRA Tree, DBH of SNRA Tree Remove. Rows include species like Pseudotsuga menziesii, Quercus garryana, Fraxinus latifolia, etc.

Table with 15 columns: Tag, Common Name, Botanical Name, Deciduous, Evergreen, DBH, Condition, Remove, Comm. Tree, DBH of Comm. Tree, SNRA Tree, DBH of Tree in SNRA, SNRA Tree Remove, DBH of SNRA Tree, DBH of SNRA Tree Remove. Rows include species like Quercus garryana, Fraxinus latifolia, Acer macrophyllum, etc.

Table with 15 columns: Tag, Common Name, Botanical Name, Deciduous, Evergreen, DBH, Condition, Remove, Comm. Tree, DBH of Comm. Tree, SNRA Tree, DBH of Tree in SNRA, SNRA Tree Remove, DBH of SNRA Tree, DBH of SNRA Tree Remove. Rows include species like Fraxinus latifolia, Quercus garryana, Salix scopulorum, etc.

Table with 15 columns: Tag, Common Name, Botanical Name, Deciduous, Evergreen, DBH, Condition, Remove, Comm. Tree, DBH of Comm. Tree, SNRA Tree, DBH of Tree in SNRA, SNRA Tree Remove, DBH of SNRA Tree, DBH of SNRA Tree Remove. Rows include species like Pseudotsuga menziesii, Quercus garryana, Fraxinus latifolia, etc.

Table with 15 columns: Tag, Common Name, Botanical Name, Deciduous, Evergreen, DBH, Condition, Remove, Comm. Tree, DBH of Comm. Tree, SNRA Tree, DBH of Tree in SNRA, SNRA Tree Remove, DBH of SNRA Tree, DBH of SNRA Tree Remove. Rows include species like Pseudotsuga menziesii, Fraxinus latifolia, Quercus garryana, etc.

Table with 15 columns: Tag, Common Name, Botanical Name, Deciduous, Evergreen, DBH, Condition, Remove, Comm. Tree, DBH of Comm. Tree, SNRA Tree, DBH of Tree in SNRA, SNRA Tree Remove, DBH of SNRA Tree, DBH of SNRA Tree Remove. Rows include species like Pseudotsuga menziesii, Fraxinus latifolia, Quercus garryana, etc.

Table with 15 columns: Tag, Common Name, Botanical Name, Deciduous, Evergreen, DBH, Condition, Remove, Comm. Tree, DBH of Comm. Tree, SNRA Tree, DBH of Tree in SNRA, SNRA Tree Remove, DBH of SNRA Tree, DBH of SNRA Tree Remove. Rows include species like Pseudotsuga menziesii, Fraxinus latifolia, Quercus garryana, etc.

THE RIDGE AT SOUTH COOPER MOUNTAIN BEAVERTON, OREGON TREE DATA TABLE. Includes Otak logo, HammiGlobal Partner information, and project details.

NO. DATE BY REVISION COMMENTS

Design Drawn Checked Date Initial Issue Date

otak HammiGlobal Partner 808 SW 3rd Ave, Ste. 300 Portland, OR 97204 Phone: (503) 287-6825 Fax: (503) 415-2304 www.otak.com

17849 P17849LTP-BLS Project No. Drawing No. LTP-6 Sheet No.

© Otak, Inc. 2016

Tag	Common Name	Botanical Name	Deciduous	Evergreen	DBH	Condition	Remove	Comm. Tree Remove	DBH of Comm. Tree	SNRA Tree	DBH of TREE in SNRA	SNRA Tree Remove	DBH of SNRA Tree Remove
731	Douglas fir	Pseudotsuga menziesii	-	X	13	Good	x	1	13	-	-	-	-
733	Douglas fir	Pseudotsuga menziesii	-	X	10	Good	x	1	10	-	-	-	-
744	Douglas fir	Pseudotsuga menziesii	-	X	11	Good	x	1	11	-	-	-	-
751	Douglas fir	Pseudotsuga menziesii	-	X	13	Good	x	1	13	-	-	-	-
736	Douglas fir	Pseudotsuga menziesii	-	X	11	Good	x	1	11	-	-	-	-
737	Douglas fir	Pseudotsuga menziesii	-	X	12	Good	x	1	12	-	-	-	-
738	Douglas fir	Pseudotsuga menziesii	-	X	14	Good	x	1	14	-	-	-	-
739	Douglas fir	Pseudotsuga menziesii	-	X	10	Good	x	1	10	-	-	-	-
740	Douglas fir	Pseudotsuga menziesii	-	X	11	Good	x	1	11	-	-	-	-
742	Douglas fir	Pseudotsuga menziesii	-	X	10	Good	x	1	10	-	-	-	-
743	Douglas fir	Pseudotsuga menziesii	-	X	11	Good	x	1	11	-	-	-	-
744	Douglas fir	Pseudotsuga menziesii	-	X	11	Good	x	1	11	-	-	-	-
745	Douglas fir	Pseudotsuga menziesii	-	X	10	Good	x	1	10	-	-	-	-
748	Douglas fir	Pseudotsuga menziesii	-	X	10	Good	x	1	10	-	-	-	-
749	Douglas fir	Pseudotsuga menziesii	-	X	10	Good	x	1	10	-	-	-	-
750	Douglas fir	Pseudotsuga menziesii	-	X	10	Good	x	1	10	-	-	-	-
751	Douglas fir	Pseudotsuga menziesii	-	X	10	Good	x	1	10	-	-	-	-
752	Douglas fir	Pseudotsuga menziesii	-	X	12	Good	x	1	12	-	-	-	-
753	Douglas fir	Pseudotsuga menziesii	-	X	12	Good	x	1	12	-	-	-	-
754	Douglas fir	Pseudotsuga menziesii	-	X	12	Good	x	1	12	-	-	-	-
755	Douglas fir	Pseudotsuga menziesii	-	X	10	Good	x	1	10	-	-	-	-
756	Douglas fir	Pseudotsuga menziesii	-	X	10	Good	x	1	10	-	-	-	-
757	Douglas fir	Pseudotsuga menziesii	-	X	10	Good	x	1	10	-	-	-	-
758	Douglas fir	Pseudotsuga menziesii	-	X	10	Good	x	1	10	-	-	-	-
760	Douglas fir	Pseudotsuga menziesii	-	X	11	Good	x	1	11	-	-	-	-
761	Douglas fir	Pseudotsuga menziesii	-	X	10	Good	x	1	10	-	-	-	-
762	Douglas fir	Pseudotsuga menziesii	-	X	13	Good	x	1	13	-	-	-	-
763	Douglas fir	Pseudotsuga menziesii	-	X	10	Good	x	1	10	-	-	-	-
764	Douglas fir	Pseudotsuga menziesii	-	X	10	Good	x	1	10	-	-	-	-
765	Douglas fir	Pseudotsuga menziesii	-	X	10	Good	x	1	10	-	-	-	-
768	Douglas fir	Pseudotsuga menziesii	-	X	11	Good	x	1	11	-	-	-	-
769	Douglas fir	Pseudotsuga menziesii	-	X	14	Good	x	1	14	-	-	-	-
770	Douglas fir	Pseudotsuga menziesii	-	X	13	Good	x	1	13	-	-	-	-
771	Douglas fir	Pseudotsuga menziesii	-	X	10	Good	x	1	10	-	-	-	-
772	Douglas fir	Pseudotsuga menziesii	-	X	10	Good	x	1	10	-	-	-	-
773	Douglas fir	Pseudotsuga menziesii	-	X	13	Good	x	1	13	-	-	-	-
774	Douglas fir	Pseudotsuga menziesii	-	X	17	Good	x	1	17	-	-	-	-
775	Douglas fir	Pseudotsuga menziesii	-	X	11	Good	x	1	11	-	-	-	-
776	Douglas fir	Pseudotsuga menziesii	-	X	10	Good	x	1	10	-	-	-	-
777	Douglas fir	Pseudotsuga menziesii	-	X	10	Good	x	1	10	-	-	-	-
779	Douglas fir	Pseudotsuga menziesii	-	X	10	Good	x	1	10	-	-	-	-
780	Douglas fir	Pseudotsuga menziesii	-	X	11	Good	x	1	11	-	-	-	-
781	Douglas fir	Pseudotsuga menziesii	-	X	11	Good	x	1	11	-	-	-	-
782	Douglas fir	Pseudotsuga menziesii	-	X	10	Good	x	1	10	-	-	-	-
783	Douglas fir	Pseudotsuga menziesii	-	X	10	Good	x	1	10	-	-	-	-
785	Douglas fir	Pseudotsuga menziesii	-	X	11	Good	x	1	11	-	-	-	-
786	Douglas fir	Pseudotsuga menziesii	-	X	12	Good	x	1	12	-	-	-	-
787	Douglas fir	Pseudotsuga menziesii	-	X	10	Good	x	1	10	-	-	-	-
790	Douglas fir	Pseudotsuga menziesii	-	X	10	Good	x	1	10	-	-	-	-
791	Douglas fir	Pseudotsuga menziesii	-	X	10	Good	x	1	10	-	-	-	-
792	Douglas fir	Pseudotsuga menziesii	-	X	10	Good	x	1	10	-	-	-	-
793	Douglas fir	Pseudotsuga menziesii	-	X	10	Good	x	1	10	-	-	-	-
794	Douglas fir	Pseudotsuga menziesii	-	X	10	Good	x	1	10	-	-	-	-
795	Douglas fir	Pseudotsuga menziesii	-	X	10	Good	x	1	10	-	-	-	-
796	Douglas fir	Pseudotsuga menziesii	-	X	11	Good	x	1	11	-	-	-	-
797	Douglas fir	Pseudotsuga menziesii	-	X	12	Good	x	1	12	-	-	-	-

Tag	Common Name	Botanical Name	Deciduous	Evergreen	DBH	Condition	Remove	Comm. Tree Remove	DBH of Comm. Tree	SNRA Tree	DBH of TREE in SNRA	SNRA Tree Remove	DBH of SNRA Tree Remove		
919	Douglas fir	Pseudotsuga menziesii	-	X	29	Poor	x	1	29	-	-	-	-		
920	Ponderosa pine	Pinus ponderosa	-	X	48	Poor	x	1	48	-	-	-	-		
921	Garry oak	Quercus garryana	X	-	12	Poor	x	1	12	-	-	-	-		
922	Oregon ash	Fraxinus latifolia	X	-	14	Poor	x	1	14	-	-	-	-		
276A	Douglas fir	Pseudotsuga menziesii	-	X	32	Poor	x	1	32	-	-	-	-		
A	Douglas fir	Pseudotsuga menziesii	-	X	15	Good	x	1	15	-	-	-	-		
B	Lombardy poplar	Populus nigra	X	-	26	Good	-	-	-	-	-	-	-		
									10,984	478	7,246	326	6,156	131	2,524

Tag	Common Name	Botanical Name	Deciduous	Evergreen	DBH	Condition	Remove	Comm. Tree Remove	DBH of Comm. Tree	SNRA Tree	DBH of TREE in SNRA	SNRA Tree Remove	DBH of SNRA Tree Remove
798	Douglas fir	Pseudotsuga menziesii	-	X	12	Good	x	1	12	-	-	-	-
800	Douglas fir	Pseudotsuga menziesii	-	X	13	Good	x	1	13	-	-	-	-
801	Douglas fir	Pseudotsuga menziesii	-	X	11	Good	x	1	11	-	-	-	-
802	Douglas fir	Pseudotsuga menziesii	-	X	10	Good	x	1	10	-	-	-	-
804	Douglas fir	Pseudotsuga menziesii	-	X	10	Good	x	1	10	-	-	-	-
805	Douglas fir	Pseudotsuga menziesii	-	X	11	Good	x	1	11	-	-	-	-
806	Douglas fir	Pseudotsuga menziesii	-	X	11	Good	x	1	11	-	-	-	-
809	sweet cherry	Prunus avium	X	-	10	Poor	x	1	10	-	-	-	-
810	sweet cherry	Prunus avium	X	-	20	Good	x	1	20	-	-	-	-
811	ash	Fraxinus latifolia	X	-	12	Good	x	1	12	-	-	-	-
812	sweet cherry	Prunus avium	X	-	10	Good	x	1	10	-	-	-	-
814	Douglas fir	Pseudotsuga menziesii	-	X	29	Good	x	1	29	1	29	1	29
815	Scouler willow	Salix scouleriana	X	-	12	Poor	x	1	12	1	12	1	12
817	Douglas fir	Pseudotsuga menziesii	-	X	44	Poor	x	1	44	1	44	1	44
818	Oregon ash	Fraxinus latifolia	X	-	16	Poor	x	1	16	1	16	1	16
819	Douglas fir	Pseudotsuga menziesii	-	X	20	Good	x	1	20	1	20	1	20
820	Douglas fir	Pseudotsuga menziesii	-	X	28	Fair	x	1	28	1	28	1	28
822	Garry oak	Quercus garryana	X	-	25	Good	x	1	25	1	25	1	25
823	Douglas fir	Pseudotsuga menziesii	-	X	11	Good	x	1	11	1	11	1	11
824	Garry oak	Quercus garryana	X	-	28	Good	x	1	28	1	28	1	28
825	sweet cherry	Prunus avium	X	-	12	Good	x	1	12	1	12	1	12
826	Garry oak	Quercus garryana	X	-	18.5	Good	x	1	18.5	1	18.5	1	18.5
827	Pacific madrone	Arbutus menziesii	X	-	35	Good	x	1	35	1	35	1	35
828	Garry oak	Quercus garryana	X	-	12	Good	x	1	12	1	12	1	12
829	Garry oak	Quercus garryana	X	-	14	Good	x	1	14	1	14	1	14
830	Garry oak	Quercus garryana	X	-	11	Good	x	1	11	1	11	1	11
831	Garry oak	Quercus garryana	X	-	13	Fair	x	1	13	1	13	1	13
832	Garry oak	Quercus garryana	X	-	10	Good	x	1	10	1	10	1	10
833	Garry oak	Quercus garryana	X	-	15	Good	x	1	15	1	15	1	15
834	Garry oak	Quercus garryana	X	-	15	Good	x	1	15	1	15	1	15
835	Douglas fir	Pseudotsuga menziesii	-	X	11	Good	x	1	11	1	11	1	11
836	Douglas fir	Pseudotsuga menziesii	-	X	40	Good	x	1	40	1	40	1	40
837	Garry oak	Quercus garryana	X	-	30	Good	x	1	30	1	30	1	30
838	Douglas fir	Pseudotsuga menziesii	-	X	51	Good	-	-	-	1	51	-	-
839	Garry oak	Quercus garryana	X	-	19	Good	-	-	-	1	19	-	-
840	Douglas fir	Pseudotsuga menziesii	-	X	28	Good	-	-	-	1	28	-	-
841	big leaf maple	Acer macrophyllum	X	-	23	Good	x	1	23	1	23	1	23
842	Douglas fir	Pseudotsuga menziesii	-	X	14	Good	x	1	14	1	14	1	14
843	ponderosa pine	Pinus ponderosa	-	X	45	Poor	x	1	45	1	45	1	45
844	Douglas fir	Pseudotsuga menziesii	-	X	10	Good	x	1	10	1	10	1	10
845	madrone	#N/A	#N/A	-	12	Good	x	1	12	1	12	1	12
846	Douglas fir	Pseudotsuga menziesii	-	X	40	Good	x	1	40	1	40	1	40
847	Garry oak	Quercus garryana	X	-	23	Poor	x	1	23	1	23	1	23
848	Douglas fir	Pseudotsuga menziesii	-	X	15	Poor	x	1	15	1	15	1	15
849	Oregon ash	Fraxinus latifolia	X	-	16	Poor	x	1	16	1	16	1	16
850	Douglas fir	Pseudotsuga menziesii	-	X	15	Good	-	-	-	1	15	-	-
851	Douglas fir	Pseudotsuga menziesii	-	X	28	Good	-	-	-	1	28	-	-
852	Garry oak	Quercus garryana	X	-	24	Good	-	-	-	1	24	-	-
853	big leaf maple	Acer macrophyllum	X	-	19	Good	x	1	19	1	19	1	19
854	Scouler willow	Salix scouleriana	X	-	11	Poor	x	1	11	1	11	1	11
855	Garry oak	Quercus garryana	X	-	28	Good	x	1	28	1	28	1	28
856	Douglas fir	Pseudotsuga menziesii	-	X	15	Good	x	1	15	1	15	1	15
857	Garry oak	Quercus garryana	X	-	17	Good	-	-	-	1	17	-	-
858	Douglas fir	Pseudotsuga menziesii	-	X	28	Good	-	-	-	1	28	-	-
859	Garry oak	Quercus garryana	X	-	20	Good	-	-	-	1	20	-	-
860	Garry oak	Quercus garryana	X	-	25	Fair	-	-	-	1	25	-	-

Tag	Common Name	Botanical Name	Deciduous	Evergreen	DBH	Condition	Remove	Comm. Tree Remove	DBH of Comm. Tree	SNRA Tree	DBH of TREE in SNRA	SNRA Tree Remove	DBH of SNRA Tree Remove
861	Garry oak	Quercus garryana	X	-	26	Fair	-	-	-	1	26	-	-
862	Garry oak	Qu											